

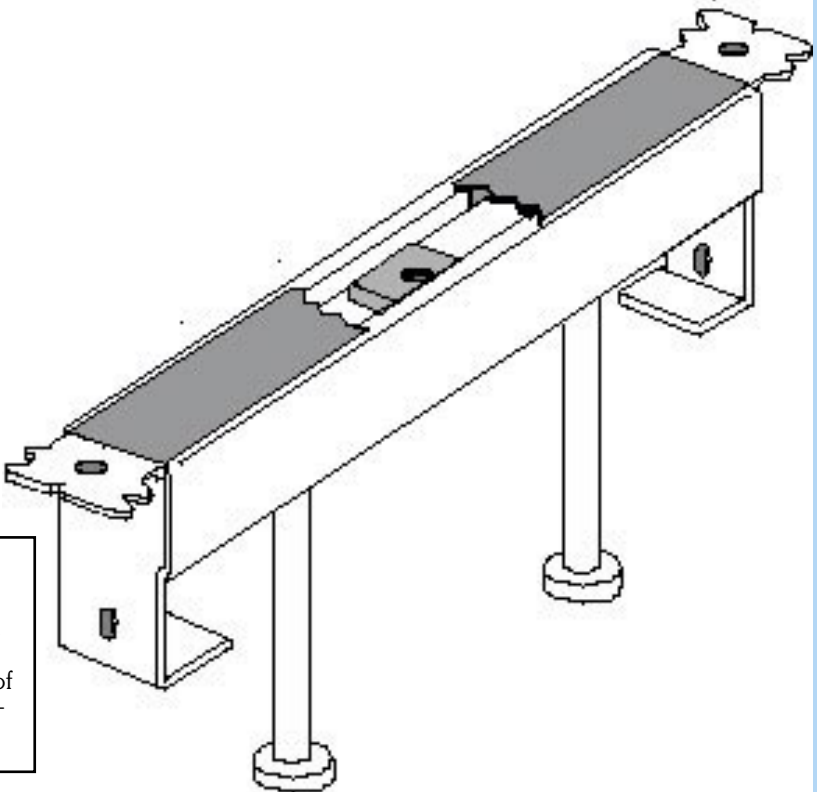
HEAVY DUTY CONCRETE INSERT

FS-9319 CONCRETE INSERT WITH STUDS AND INSTALLED NUTS

For use in heavy loading conditions; i.e. glass and stone retention; anchoring curtain wall mullions and structural grids.

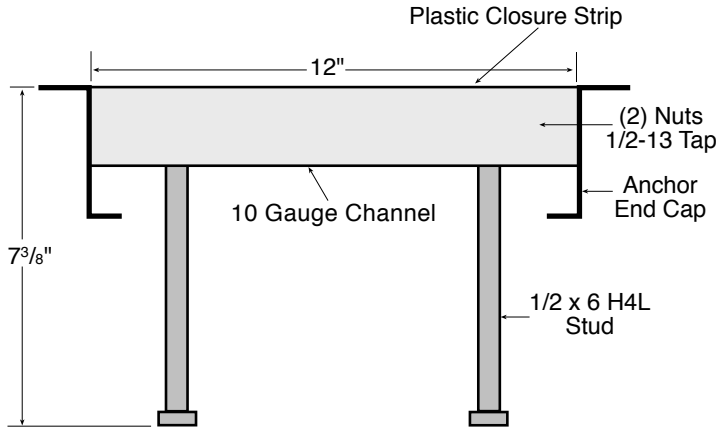
Inserts come complete with anchor end caps, plastic closure and two (2) 1/2 - 13 channel nuts factory installed.

Channel nuts should be placed a minimum of 3" on center.



Design Load = 7,500#
Safety Factor = 2-1/2
When properly imbedded in concrete with a minimum compressive strength of 4,000 psi and a minimum edge distance of 5" from center line of insert to edge of concrete. Loading based on using a (2) nut & bolt connection with "T" clip attachment.

Design Load = 6,000#
Safety Factor = 3
When properly imbedded in concrete with a minimum compressive strength of 3,000 psi and a minimum edge distance of 2-3/4" from center line of insert to edge of concrete. Loading based on using a (2) nut & bolt connection with "T" clip attachment.



Contact factory regarding special loading conditions and special fabrications.

FS-9319-90 OS	FS-9319-135 OS	FS-9319-90 IS	FS-9319-135 IS
OUTSIDE CORNERS		INSIDE CORNERS	

STANDARD FINISH = ELECTRO-GALVANIZED (GD)
or HOT DIP GALVANIZED (HD)