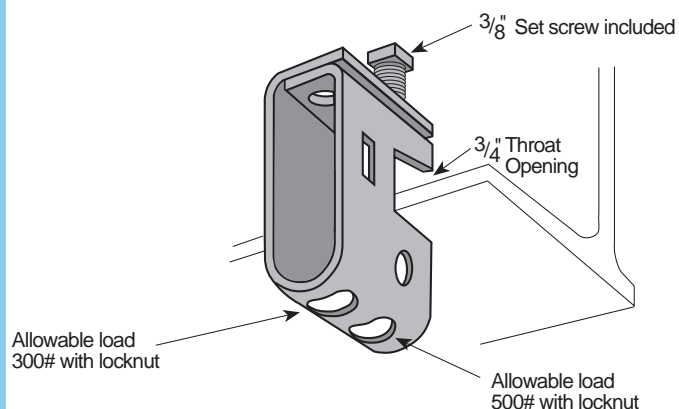


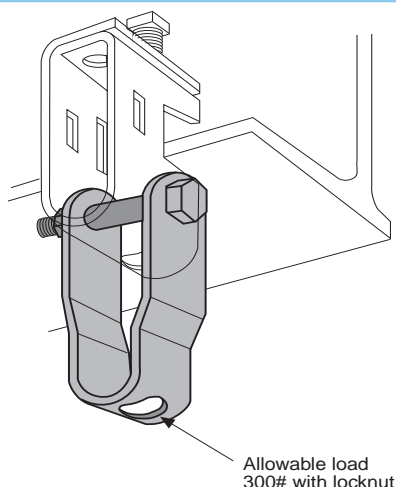
BEAM CLAMPS

43#/Cpc



FS-5750
ALL-PURPOSE BEAM CLAMP

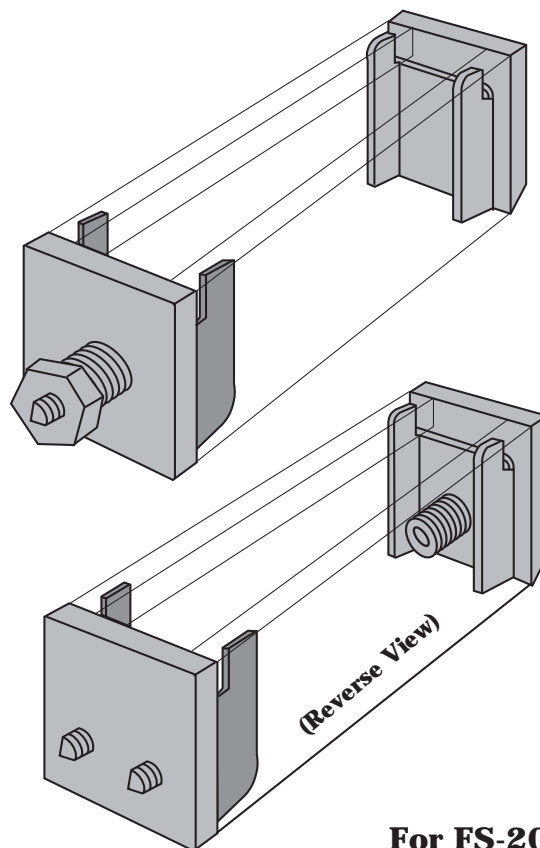
29#/Cpc



FS-5751
SWIVEL HANGER

53#/Cpc

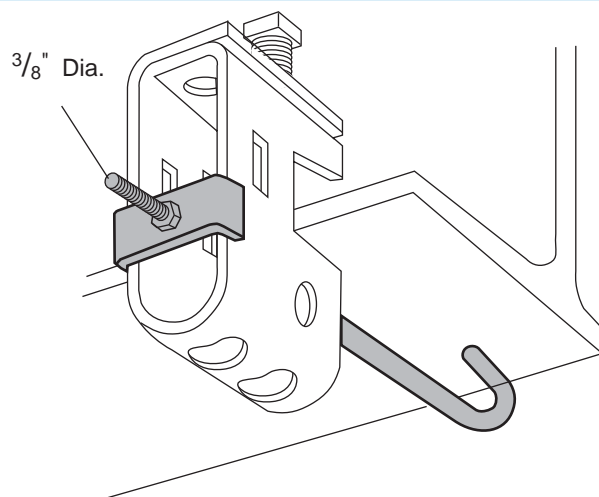
Sold In Sets



For FS-200
Channel Only

FS-5760
COLUMN ATTACHMENT FLANGE-TO-FLANGE CLAMP

FS-200 CHANNEL ORDERED SEPARATELY.
CHANNEL SHOULD BE CUT 1-1/2" SHORTER THAN INSIDE DIMENSION
BETWEEN COLUMN FLANGES. ALLOWABLE LOAD 800#.



FS-5755 & FS-5756
"J" BOLT

Part No.	Flange Width		J-Bolt Length	Wt./ 100 pcs.
	Min.	Max.		
FS-5755	3"	7"	8-5/8"	24
FS-5756	7"	11"	12-5/8"	33

Use with FS-5750 Beam Clamp